



HUNTERS[®]
HERE TO GET *you* THERE

2 Thorpe House Road, Norton Lees, Sheffield, S8 9NR

2 Thorpe House Road, Norton Lees, Sheffield, S8 9NR

£300,000

An extended three bedroom semi detached house with occasional loft room, occupying a generous corner plot in this sought after residential area convenient for local amenities, schools and transport services. The property is surrounded by beautifully gardens to three sides and briefly comprises; to the ground floor is the side entrance lobby with stairs to the first floor, the bay windowed living room with feature fireplace, double doors to the dining room with French doors to garden A separate kitchen has a range of matching wall and base units along with space for a stove. To the first floor are two double bedrooms, a single third bedroom and family bathroom with pull down loft ladder access to an occasional loft room which has both front and rear Velux windows.

GENERAL REMARKS

TENURE

This property is long Leasehold with a term of 1000 years from 24 June 1933 at a ground rent of £** per annum.

RATING ASSESSMENT

We are verbally advised by the Local Authority that the property is assessed for Council Tax purposes to Band B.

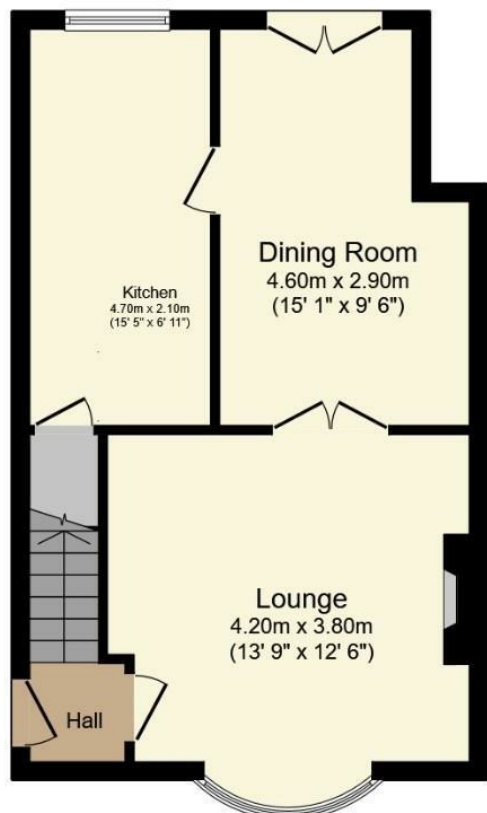
VACANT POSSESSION

Vacant possession will be given on completion and all fixtures and fittings mentioned in the above particulars are to be included in the sale.

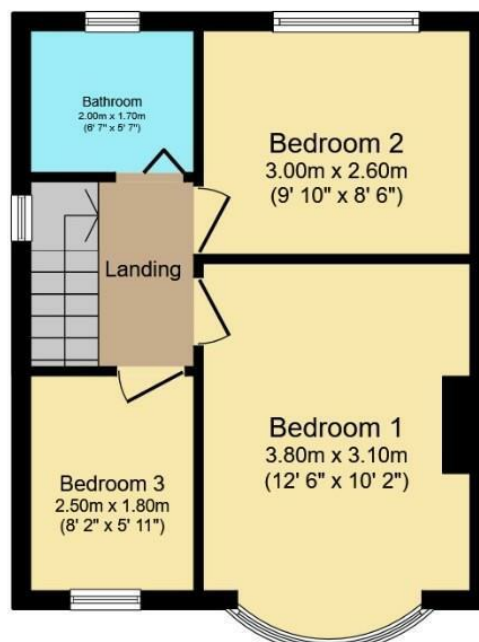
MORTGAGE FACILITIES

We should be pleased to advise you in obtaining the best type of Mortgage to suit your individual requirements. YOUR HOME IS AT RISK IF YOU DO NOT KEEP UP REPAYMENTS ON A MORTGAGE OR OTHER LOANS SECURED ON IT.

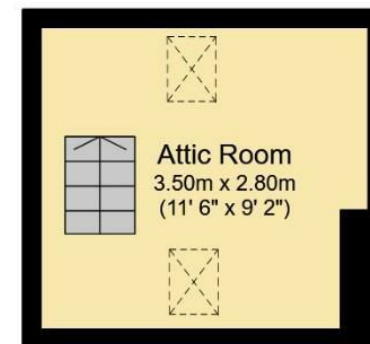
Hunters Sheffield - Woodseats 764 Chesterfield Road, Woodseats, S8 0SE | 0114 258 0111
sheffieldwoodseats@hunters.com | www.hunters.com



Ground Floor



First Floor

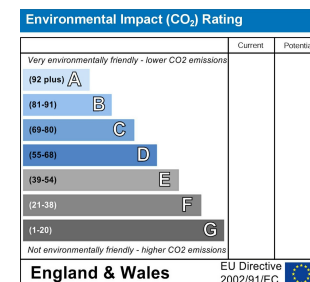
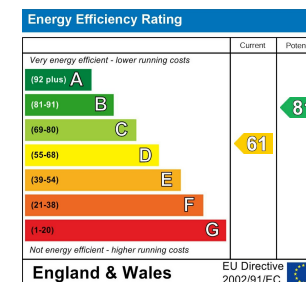


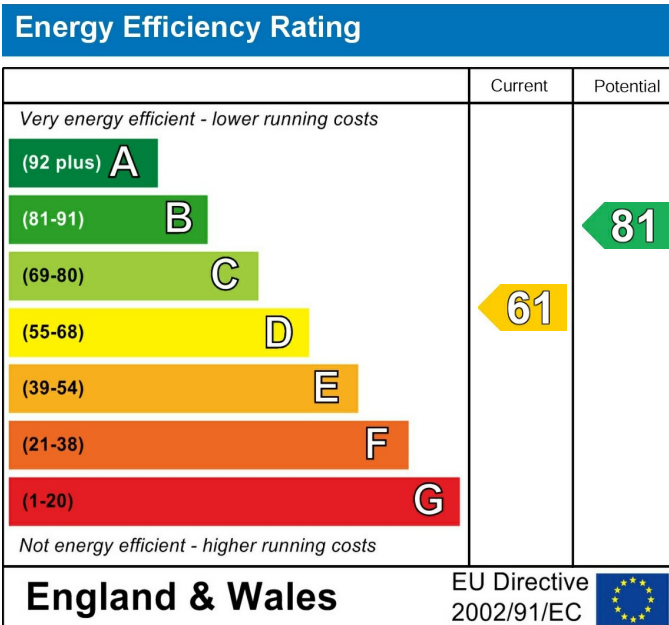
Attic

Total floor area 90.2 m² (971 sq.ft.) approx

This floor plan is for illustrative purposes only. It is not drawn to scale. Any measurements, floor areas (including any total floor area), openings and orientation are approximate. No details are guaranteed, they cannot be relied upon for any purpose and they do not form part of any agreement. No liability is taken for any error, omission or misstatement. A party must rely upon its own inspection(s).

Powered by www.focalagent.com





These particulars are intended to give a fair and reliable description of the property but no responsibility for any inaccuracy or error can be accepted and do not constitute an offer or contract. We have not tested any services or appliances (including central heating if fitted) referred to in these particulars and the purchasers are advised to satisfy themselves as to the working order and condition. If a property is unoccupied at any time there may be reconnection charges for any switched off/disconnected or drained services or appliances - All measurements are approximate. If you are thinking of selling your home or just curious to discover the value of your property, Hunters would be pleased to provide free, no obligation sales and marketing advice. Even if your home is outside the area covered by our local offices we can arrange a Market Appraisal through our national network of Hunters estate agents.









